



**ecoHITCH** - Designed Specifically For Your **Green Vehicle**

# Installation Instructions

Application Fits

2004-2009 Toyota Prius GEN II

X7196 & X7197

2" & 1.25" EcoHitch Stealth

200 lbs. Tongue Weight/ 2,000 lbs. Towing Weight

Torklift Central  
315 Central Ave N  
Kent WA, 98032  
253-854-1832

[www.torkliftcentral.com](http://www.torkliftcentral.com)  
[support@tlcentral.com](mailto:support@tlcentral.com)

## Stay Connected



torkliftcentral



torkliftcentral



tlcentral



torklift central



torklift central



Bolt Kit Weight:255g +/-

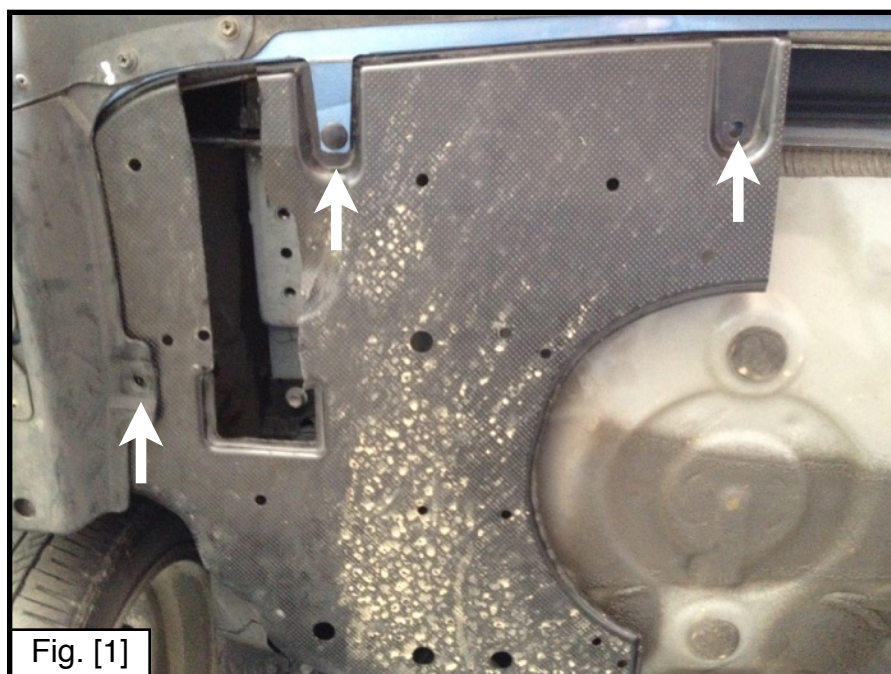
Hardware Included

QTY	Fastener
8	7/16" Flat Washer
4	7/16" Lock Washer
4	M10-1.25 x 40mm Bolt
2	18" Black Zip Ties

**READ THESE INSTRUCTIONS THOROUGHLY AND ACCOUNT FOR ALL HARDWARE LISTED BEFORE BEGINNING INSTALLATION!**

**Step 1.** Raise rear of vehicle and place on ramps or suitable jack stands.

**Step 2.** Remove the black plastic undercarriage cover. There are (7) plastic clips that need to be removed to allow the plastic cover to be removed. See Figure [1].



**Step 3.** Once the undercarriage cover has been removed you will remove the two factory transport hooks. There is one hook on the driver and passenger side. Return hooks and bolt to customer.



Fig. [2]



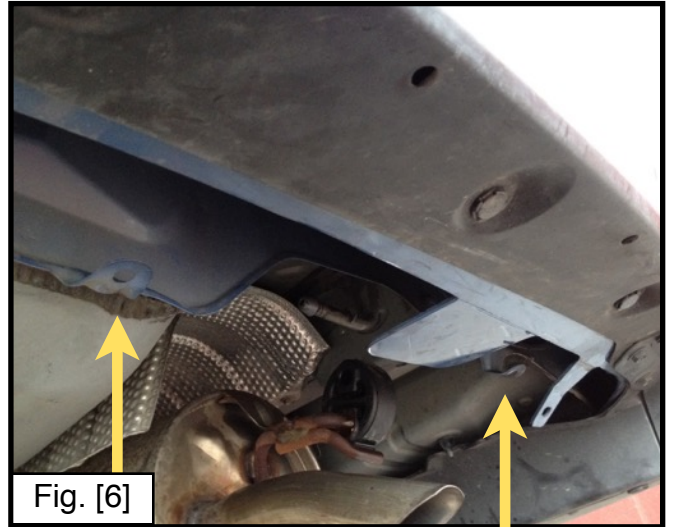
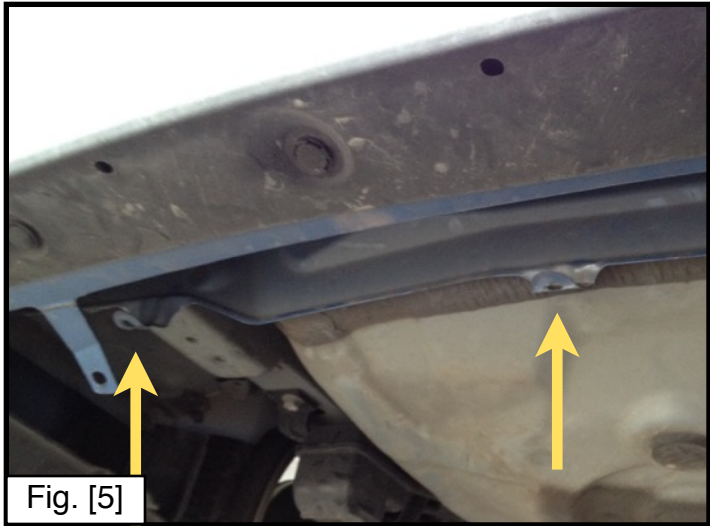
Fig. [3]

**Step 4.** Lubricate the upper rubber exhaust hanger with a lubricant such as WD-40. Once lubricated, carefully lower the exhaust system by removing the rubber exhaust hanger holding the exhaust to the frame hanger. This will ease the installation of the trailer hitch.

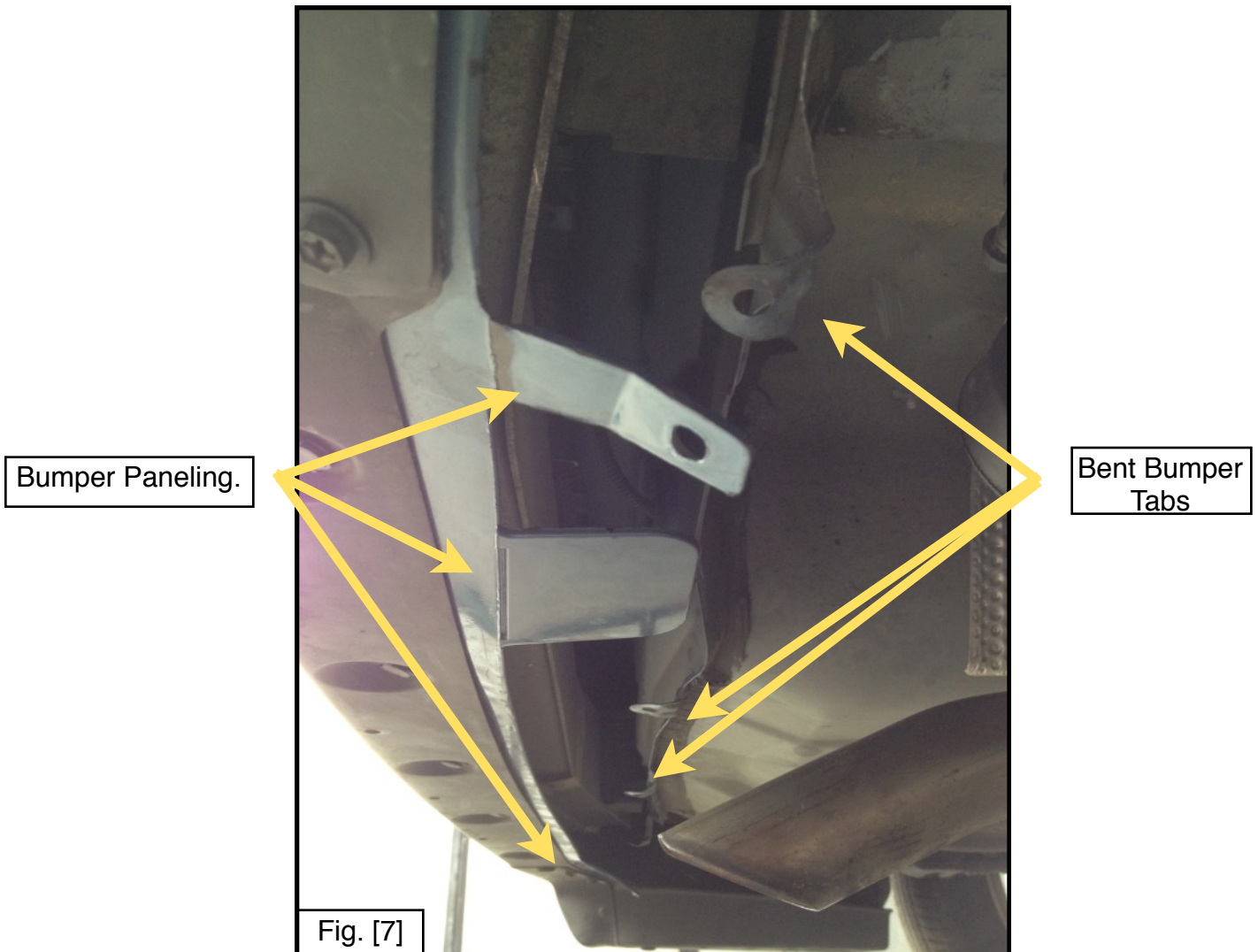


Fig. [4]

**Step 5.** Bend the metal fascia tabs shown below by the arrows. These tabs will need to be bent backwards toward spare tire compartment to allow the trailer hitch to move into position. \*Picture shows tabs in standard position.



**Step 6.** Raise the trailer hitch up into position. The hitch hides behind the bumper. You may have to pull down on the bumper panel slightly to get the hitch to fit into position. The hitch cross-tube (center section) must pass in front of the bumper tabs. All paneling pieces go in front of the cross-tube. See illustration below.

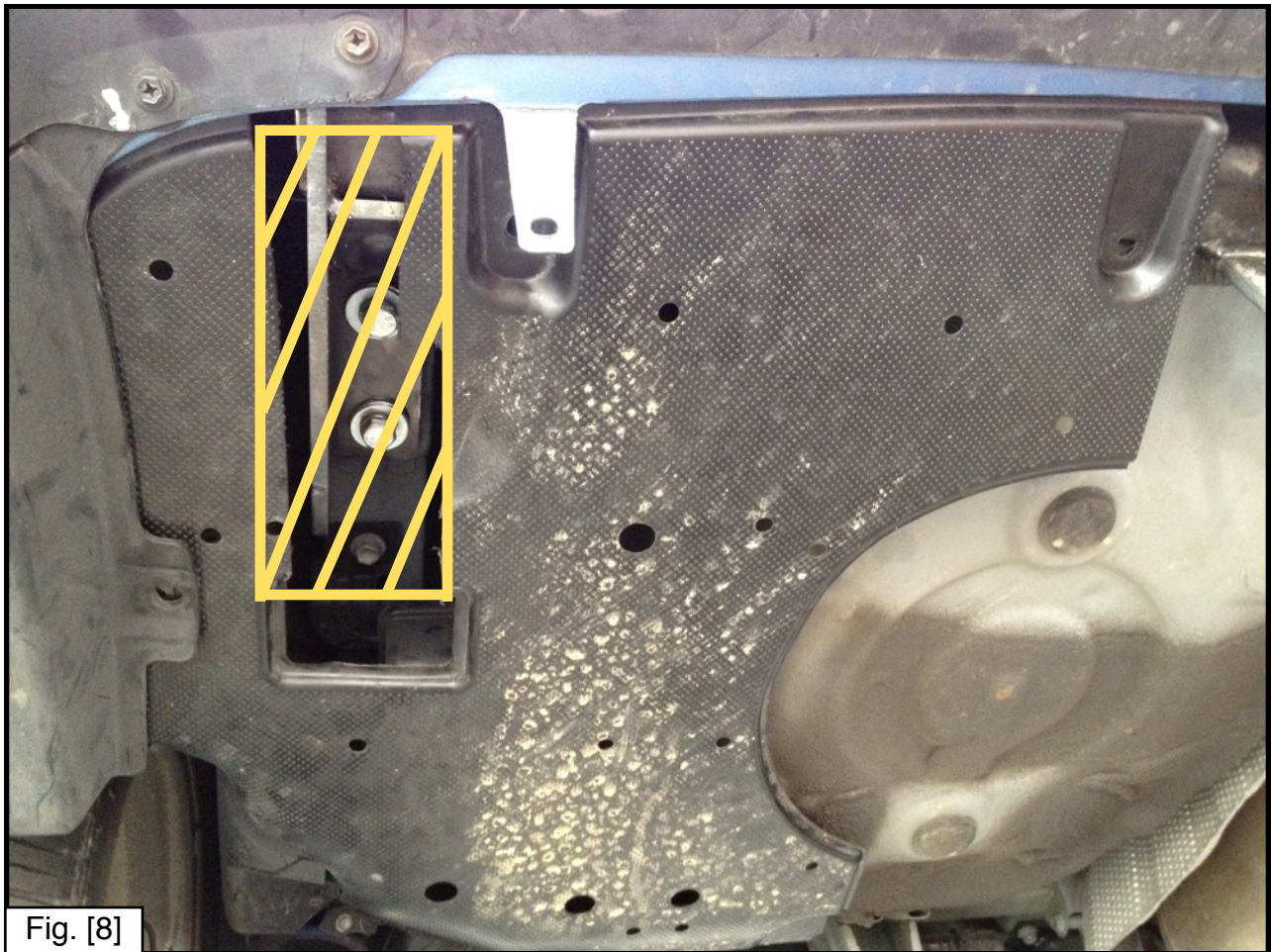


**Step 7.** Once hitch is into position, take (1) M10-1.25 x 40mm bolt, (1) 7/16" lock washer, then (2) 7/16" flat washers. Thread the fasteners into the frame. Repeat for remaining holes. Torque all hardware to 40 ft-lbs.

**Step 8.** Raise exhaust into position and re-attach exhaust hanger that was lowered in Step 4.

**Step 9.** Re-bend the tabs in Step 5 back into position.

**Step 10.** Take the lower black fascia removed in Step 2 and trim below as shown and reinstall.



**Step 11.** Take the (2) supplied zip ties. Bend the two bumper tabs as shown below back into position then take the zip tie and attach the lower black fascia to the tab. Repeat this process on the bumper tab back into position on the passengers side as well.



Fig. [9]



Fig. [10]

**Congratulations on the completed installation of the Toyota Prius Gen II EcoHitch! It is designed with a lifetime warranty for a lifetime of enjoyment. If you have any questions or suggestions please contact our tech support at [support@tlcentral.com](mailto:support@tlcentral.com) or by phone at (253)-854-1832.**



# WARRANTY/DISCLAIMER INFORMATION

Torklift Central requires proof of purchase for warranty claim registration, with pictures of any defective product before issuing a replacement. Torklift will not accept claims on any product without proof of purchase, which can be faxed, scanned, emailed or mailed to the information provided below. Torklift Central warrants its hitches, custom hitch receivers and accessories (excluding electrical wire harnesses which carry a warranty from their specified manufacturer) from date of purchase against defects in material and workmanship under normal use and service for the ownership life of the original consumer purchaser. Torklift Central will replace free of charge any part that proves defective in material or workmanship when presented to Torklift Central, transportation charges prepaid by purchaser, at the address below. **This warranty is limited to defective parts replacement only. Labor charges and/or damage incurred in installation or replacement, as well as incidental and consequential damages connected therewith are excluded.** This warranty does not include normal wear and tear or the finish and paint. Rusting, cracking or peeling of the finish is also excluded. Some states do not allow the exclusion or limitation of incidental or consequential damages, so the above limitation or exclusion may not apply to you. Any damage to Torklift Central products as a result of misuse, abuse, neglect, accident, improper installation or any use violative of instructions furnished by Torklift Central will void the warranty. This warranty gives you specific legal rights and you may also have rights, which vary from state to state. With warranty service, you may be able to go to a small claims court, a state court or a federal district court.

Although Torklift Central trailer hitches are both tested and rated for towing within the specific capacity label found on each trailer hitch. Torklift Central assumes no liability for vehicle manufacturers warranty due to the use of a Torklift Central trailer hitch being used for towing behind any vehicle or using the trailer hitch in a manner that it was not designed for. Although this specific trailer hitch has a load rating, which includes trailer tongue weight, and a trailer weight carrying capacity, Torklift Central is not responsible for the voiding of any warranty on any vehicle due to factory towing limitations. All vehicle warranties are the sole property and responsibility of the owner of the vehicle that the Torklift Central trailer hitch is installed upon. Torklift Central does not endorse towing behind any vehicle if the vehicles manufacturer states that towing is not recommended. Check your vehicle's owner's manual for the proper tow rating of your vehicle.

**ADDRESS:** 315 Central Ave N. Kent, WA 98032

**\*WARNING\*** Your vehicle may have a lower tow rating than this trailer hitch. If your vehicle's tow rating is less than the rated towing capacity on your Torklift Central trailer hitch, your trailer hitch capacity is limited to your vehicle's factory rated towing capacity.

**FOR EXAMPLE:** the label on your Torklift Central trailer hitch states it's capacity is rated for 500 pounds tongue weight and 5,000 pounds towing weight. However your vehicle's factory rated towing capacity is limited to only 350 pounds tongue weight and 3,500 pounds towing weight. In this example your maximum towing capacity of your Torklift Central trailer hitch is limited to 350 pounds tongue weight and 3,500 pounds towing weight as stated by your vehicle's maximum factory tow rating.

**\*DANGER\*** Never exceed your vehicle's manufacturer's recommended towing capacity which may be a lower rating than this trailer hitch

Unsure of your tow rating? Download our towing app from the app store to find your vehicles tow rating.  
[www.torkliftcentral.com/app.php](http://www.torkliftcentral.com/app.php)